



ROBERT
A.M. STERN
COLLECTION

BUILDING BLOX



P O R C E L A I N S T O N E™

 CROSSVILLE®

BUILDING BLOX



In the tradition of architects from Frank Lloyd Wright to Alvar Aalto, ROBERT A. M. STERN's design vision from the beginning has included not only buildings, but furnishings for interior spaces.

For more than 20 years, his firm has been involved in product design, looking to historical tradition and technological innovation for inspiration. More recently, ROBERT A. M. STERN™ Design has collaborated with respected manufacturers in the architectural and interior furnishings industry to create a comprehensive design collection of complementary products: carpeting by Bentley Prince Street, furniture by David Edward, wall coverings by Innovations, and now Building Blox Porcelain Stone® tile by Crossville, Inc.

To view the complementary products in the ROBERT A.M. STERN COLLECTION™ and to learn more about each of the manufacturers, visit www.ramscollection.com.







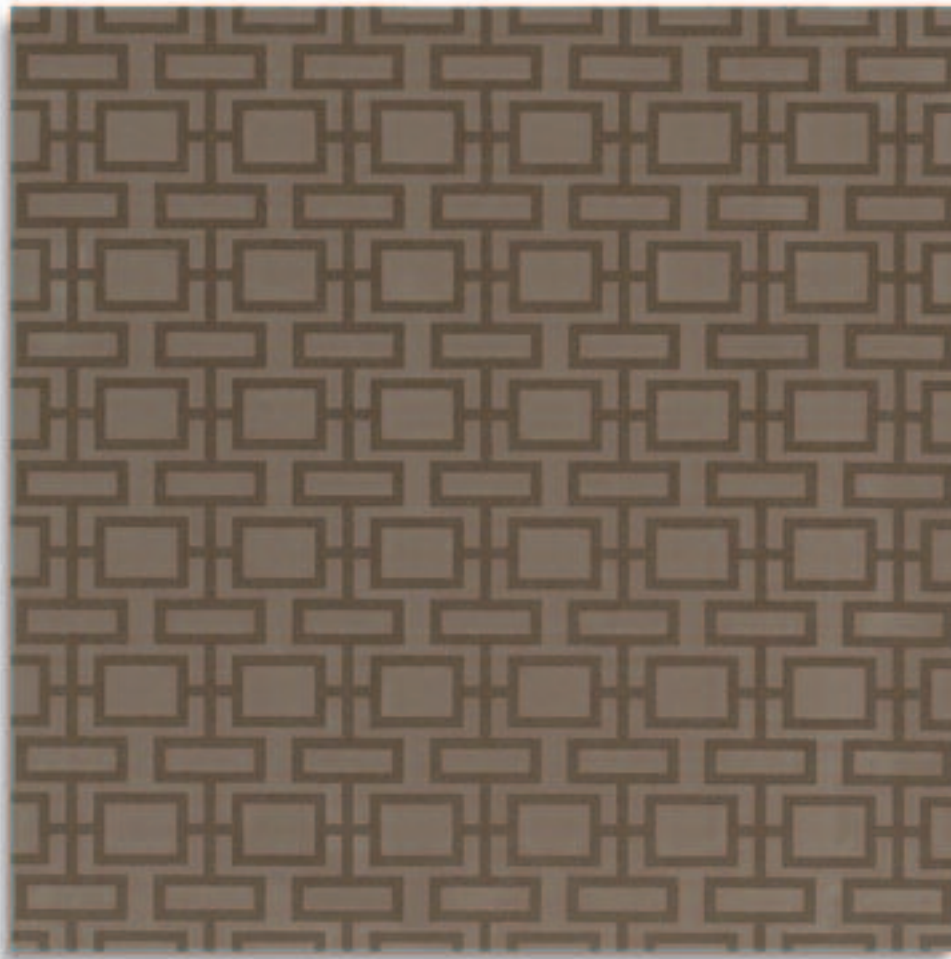
CITY GARDEN

City Garden begins with a traditional floral motif reminiscent of 19th-century wall covering, overlays it with a grid, then tumbles and rotates the squares to create a pattern that is organic and floral, yet also geometric and modern.



URBAN FABRIC

Paying homage to time-honored patterns and designs, **Urban Fabric** is an updated architectural favorite. Its clear, sharp graphics and vivid lines are a natural for today's interiors, albeit with just a hint of retro flair.







GREEK KEY

Ceramic and porcelain tile have been used to embellish and decorate buildings since ancient times. **Greek Key** is inspired by the decorative details and mosaic floor patterns typical of the classical tradition, yet at the same time crisp, clean and contemporary.



A1201 White

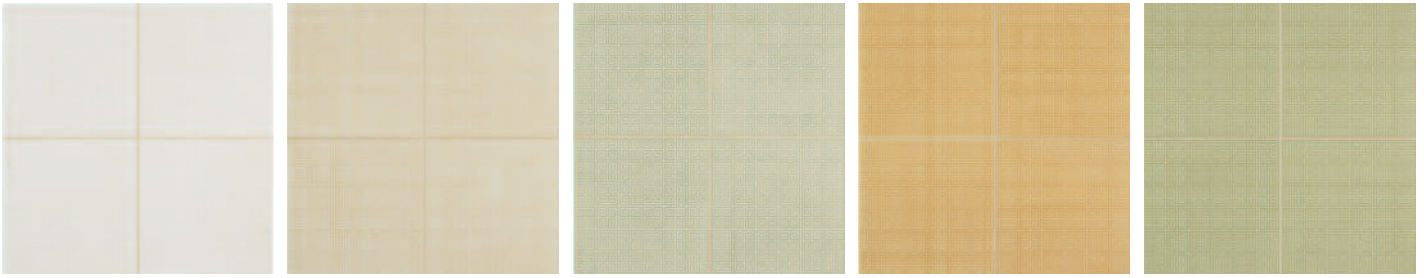
A1202 Limestone

A1203 Ice

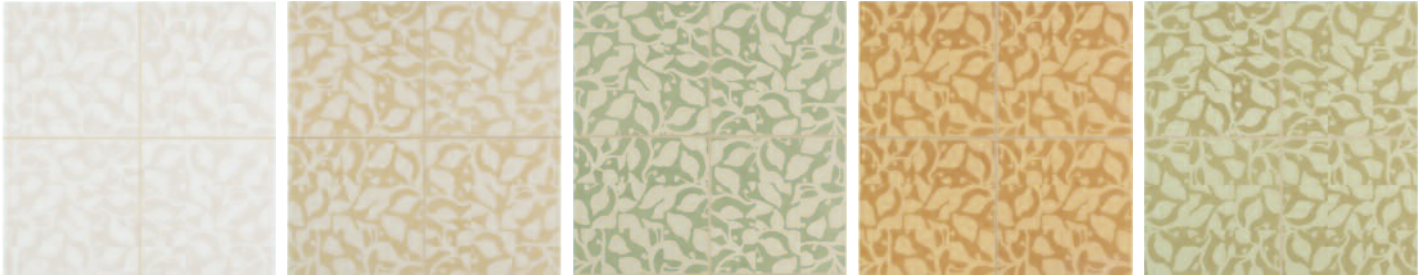
A1204 Wheat

A1205 Pistachio

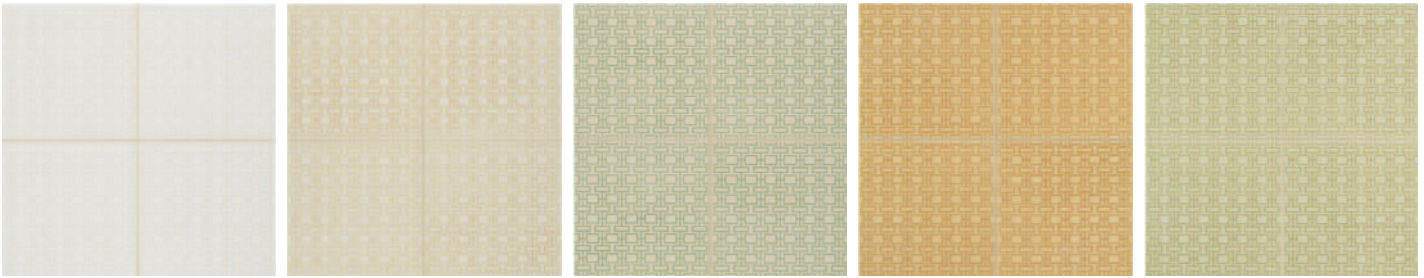
GREEK KEY



CITY GARDEN



URBAN FABRIC



SOLIDS



Sizes (Available in all colors and patterns except as noted)

Urban Fabric, Greek Key and City Garden have a larger scale pattern in

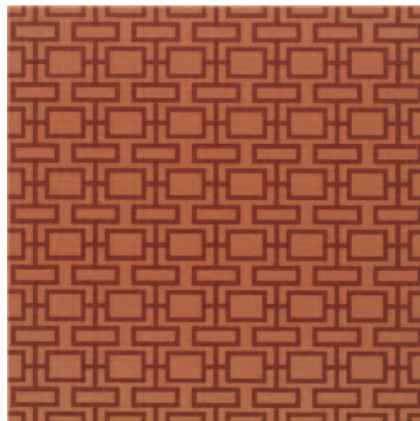
SIZES



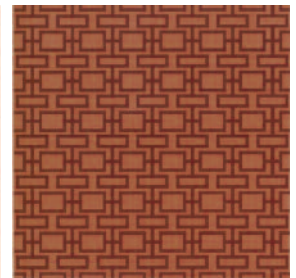
6" x 12" (solid colors only)



18" x 18"



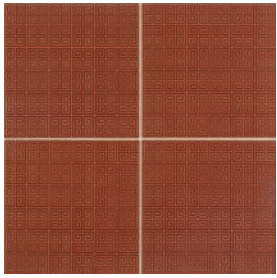
18" x 18"



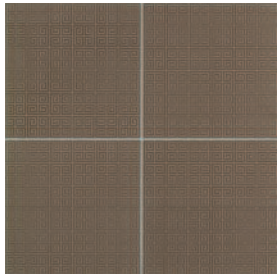
12" x 12"

12" x 12"

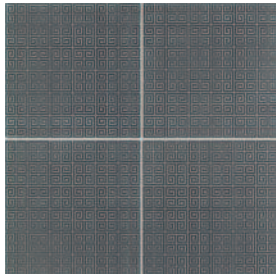
A1206 Terra Cotta



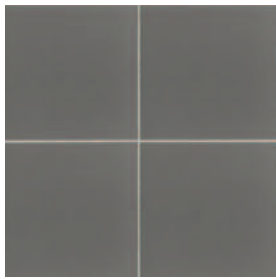
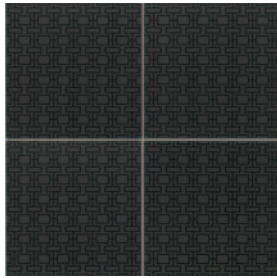
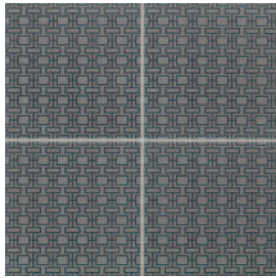
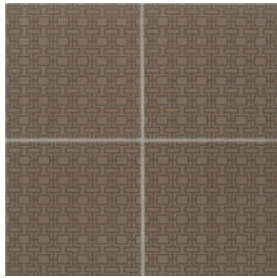
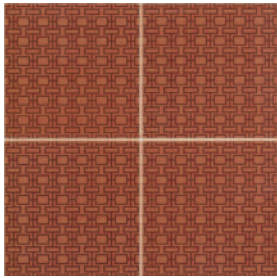
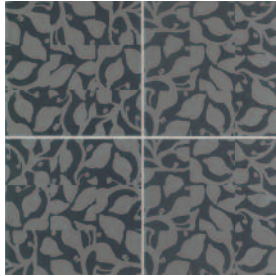
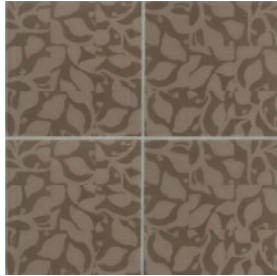
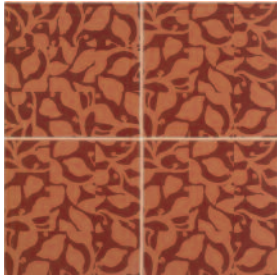
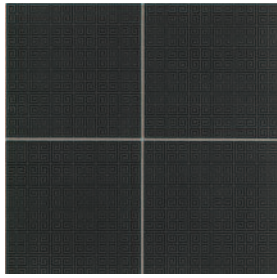
A1207 Taupe



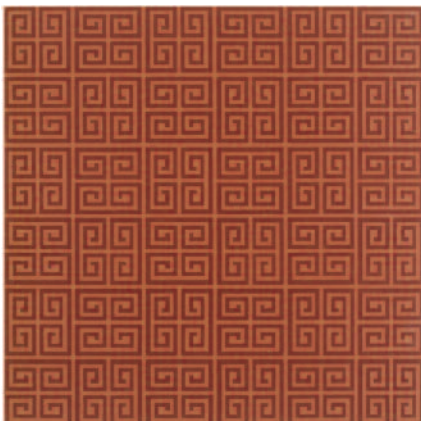
A1208 Slate



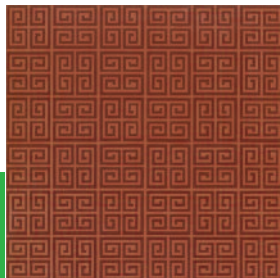
A1209 Black



the 18" x 18" tile



18" x 18"



12" x 12"



18" x 18"



12" x 12"



Sizes (Available in all colors and patterns except as noted)

Nominal Size	Actual Size (mm)	Thickness (in)
6" x 12"*	147 x 299	3/8"
12" x 12"	299 x 299	3/8"
18" x 18"	452 x 452	3/8"

*Available in solid colors only

Trim Sizes (Available in solid colors only)

4" x 12" Single Bullnose	95 x 298	3/8"
2" x 12" Cove Base	44 x 298	3/8"
2" x 2" Cove Base Inside Corner	44 x 60	3/8"
2" x 4" Cove Base Outside Corner	44 x 96	3/8"



4" x 12" Single Bullnose



2" x 12" Cove Base



2" x 2" Inside Cove Base Corner



2" x 4" Outside Cove Base Corner

Product Performance

Breaking Strength	>450 lbf.	ASTM C648
Bond Strength	>200 psi	ASTM C482
Chemical Resistance	Unaffected	ASTM C650
Frost Resistance	Resistant	ASTM C1026
Water Absorption	<0.10%	ASTM C373
Scratch Hardness	6	MOH's Scale
Visible Abrasion		ASTM C1027
A1209	Class 2	
A1208, A1207, A1206	Class 3	
A1205, A1204	Class 4	
A1203, A1202, A1201	Class 5	

Coefficient of Friction

Dry	>0.6	ASTM C1028
Wet	>0.6	ASTM C1028

Recommended Usage

Building Blox is recommended for interior floors, walls and countertops and exterior walls in both residential and commercial applications.

Care and Maintenance

Regular cleaning is the best way to keep Building Blox tile looking good for years to come. Use clean, hot water (combined with a household cleaner for more aggressive cleaning). Rinse thoroughly and dry with a soft cloth to prevent water spots. No waxes or sealers are needed. More information regarding the care and maintenance of Crossville products is available at www.crossvilleinc.com.

Shade & Texture Index

Building Blox has a shade variation of V1.



V1



V2



V3



V4

V1=Uniform Appearance
V2=Slight Variation
V3=Moderate Variation
V4=Substantial Variation

