



Cross-Colors®

PORCELAIN STONE®

 CROSSVILLE®  
ELEVATE YOUR SPACE

# Cross-Colors®

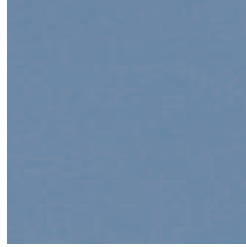
With a contemporary color palette designed by one of the industry's top color forecasters and the legendary durability of Porcelain Stone®, Cross-Colors is the go-to favorite of designers seeking a beautiful and highly functional tile.

A myriad of textures and finishes, mingles, and large particle designs ensure there is a tile to meet every demand. Striking in its simplicity, Cross-Colors provide the perfect complement to any space.



# Finishes & Textures

Crossville offers designers, architects and builders the utilitarian textures to answer the specific needs of those areas with the highest exposure. These textures are an integral part of the tile and cannot be worn down. No matter how technical the specifications, we have a surface that is highly functional, yet able to blend beautifully with any design application.



## Unpolished (UPS)

Cross-Colors Unpolished (UPS) with the CROSS-SHEEN® finish imparts a subtle glow that enhances the color of the tile and also allows stains and scuff marks to be easily wiped off the surface. Cross-Colors Unpolished is appropriate for most interior floors and walls and exterior walls, including high-traffic areas and areas where a low level of maintenance is desired. Cross-Colors Unpolished is not recommended for exterior horizontal surfaces or exterior paving.



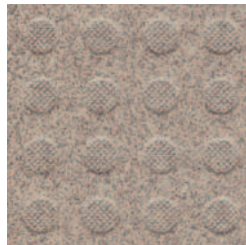
## Polished (PO)

Polished porcelain stone is an attractive and practical alternative to natural stone. Interplay with CROSS-SHEEN® or other surface textures to increase visual interest. Polished finishes are recommended for most interior floors and walls and exterior walls, including areas where a look of elegance and sophistication is desired. Polished tile is not recommended for wet areas or areas where standing water may accumulate. Polished finishes are not recommended for exterior horizontal surfaces or exterior paving.



## Cross-Slate® (CS)

The Cross-Slate finish combines the rustic and textured feel of slate with the through-body color and durability of Porcelain Stone®. Through-body color, unglazed structured surface, and a variety of sizes provide a strong commercial value where enhanced traction is needed for high traffic interior and exterior spaces. Cross-Slate is recommended for interior floors and walls as well as exterior walls and exterior walking surfaces in both residential and commercial environments.



## Cross-Dot® (CD)

The raised-dot pattern, with a "roughened" surface atop each dot, provides increased coefficient of friction. It is suitable for most commercial kitchens, food prep areas, service stations and other back-of-the-house areas, as well as for exterior walking surfaces. Meets ADA guidelines.



## Cross-Grip™ (CGS)

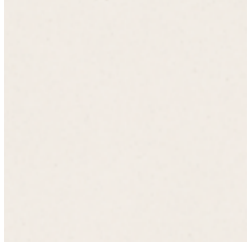
Developed in conjunction with restaurant owners, Cross-Grip is a possible solution for those areas where slips and falls are of greatest concern. The patented raised-point texture has earned Cross-Grip the highest possible performance rating in the National Restaurant Association's testing for slip resistance. It is suitable for areas where grease, food, oil and other residue tend to accumulate. Meets ADA guidelines.



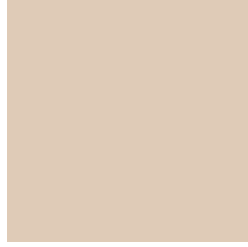
## Cross-Tread® (CTS)

Increased slip resistance and ease of maintenance make this tile a suitable choice for wet and greasy floor areas, as well as for exterior walking surfaces. The Cross-Tread surface pattern is eye-catching, making it a great option for transitional areas and for use as an accent tile. Meets ADA guidelines.

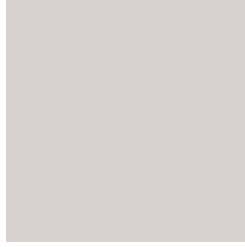
# Cross-Colors® Solids



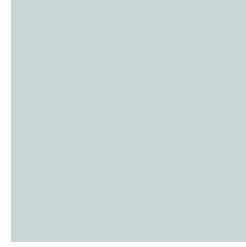
A215 Empress White\* I



B120 Peach Fresco



B100 Greige Patino



B210 Seabreeze



C583 Windsurf III



C310 Bamboo III



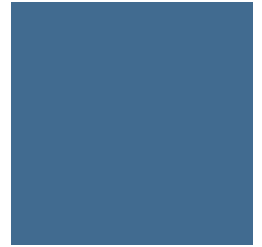
C370 Featherstone I



C810 Platinum I



C400 Bayberry III



B180 Lapis



B220 Doeskin



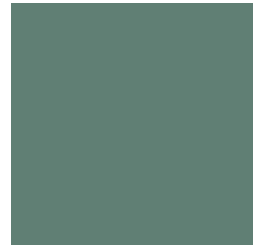
C360 Maple Sugar I



A870 Seal Taupe\* I



B230 Zeolite



B200 Primavera



A634 Terra Rosata I



B380 Sunflower



B110 Antico Taupe



B190 Amethyst



B481 Forest Green



B580 Oceana



A890 Ebony III

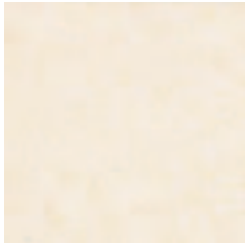
\*These colors are inventoried in cut/bevel 6" x 6", UPS finish, at Crossville. All other 6" x 6" colors and finishes are special order.

Note: The 6" x 6" cut/bevel tile is cut from 12" x 12" tile and the edges are beveled to provide a factory appearance.

Please allow two to eight weeks for delivery depending on Crossville's production schedule.

The codes for A-Series tile shown above begin with the letter "A". The codes for B-Series and C-Series tile begin with the letters "B" and "C" respectively.

# Cross-Colors® Mingles



A235 Sahara Dune\* II



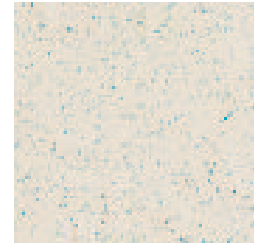
A238 Shetland II



A291 Pepper Quartz\* II



A260 Pebble\* II



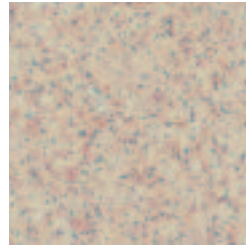
A246 Pacific Surf\* II



A236 Flax II



A750 Brown Tweed\* I



A233 Sand Bisque\* AC



A658 Fawn I



A825 Mercury\* AC



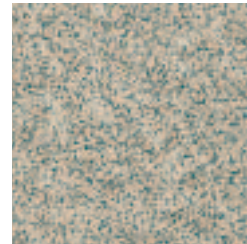
A375 Saffron II



A740 Nutmeg I



A876 Truffle\* I



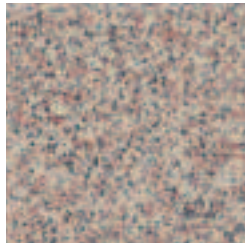
A485 Rain Forest II



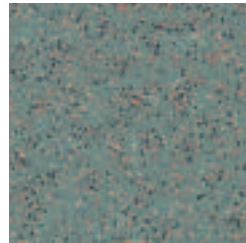
A830 Atlantic Grey I



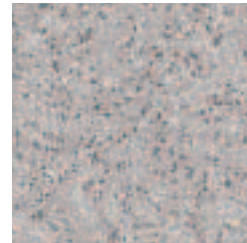
A745 Tawny II



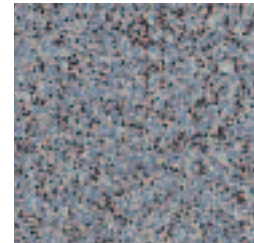
A675 Stonehenge\* AC



A410 Greenbriar II



A900 Mica\* AC



A585 Sea Mist\* II



A760 Spice Mist\* I



A660 Rosewood I



A790 Burgundy Smoke\* AC



A850 Graphite\* AC



A880 Onyx\* II

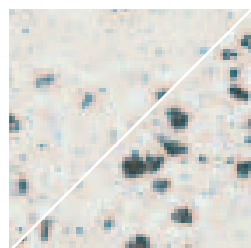


R001 Grey Mingle†  
Available in 8" x 8" UPS & CTS finishes only.

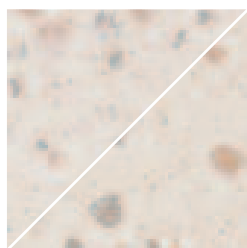
† Coordinating 6" x 8" Cove Base, 6" x 8" Cove Base Corners and 1" x 6" inside/outside Cove Base Corner available.

# Cross-Colors® LP (available in UPS/PO)

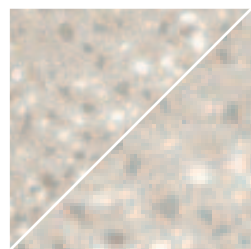
# Finishes & Textures Availability



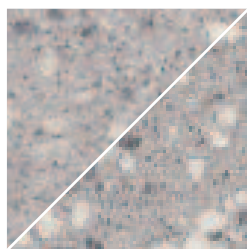
LA21 Rock Crystal II



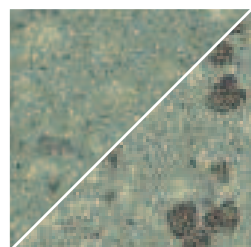
LA26 White Coral I



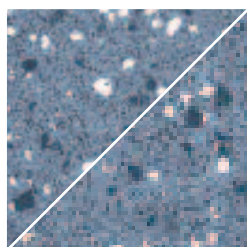
LA87 Cappuccino I



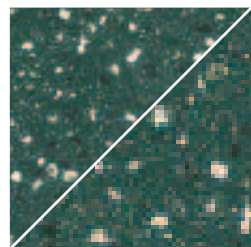
LA90 Granite Grey II



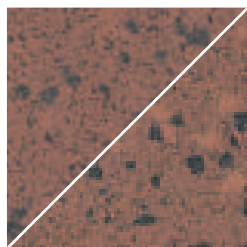
LA45 Jadestone III



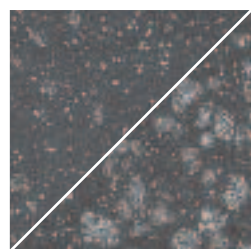
LA58 Blue Splash III



LA48 Snowpine III



LA63 Red Rock II



LA88 Black Pearl III

## Legend

■ Unpolished (UPS)	■ Polished (PO)	● Cross-Slate (CS)
▲ Cross-Tread (CTS)	▲ Cross-Dot (CD)	▲ Cross-Grip (CGS)

Size	6 x 6 c & b	8 x 8	12 x 12
<b>Cross-Colors A Series</b>			
A215 Empress White	■ ■	■ ■	■ ■
A233 Sand Bisque	■ ■ ●	■ ■ ● ▲	■ ■ ●
A235 Sahara Dune	■ ■	■ ■	■ ■
A236 Flax	■ ■	■ ■	■ ■
A238 Shetland	■ ■	■ ■	■ ■
A246 Pacific Surf	■ ■	■ ■	■ ■
A260 Pebble	■ ■	■ ■ ▲	■ ■
A291 Pepper Quartz	■ ■	■ ■	■ ■
A375 Saffron	■ ■	■ ■	■ ■
A410 Greenbriar	■ ■	■ ■ ▲	■ ■
A485 Rain Forest	■ ■	■ ■	■ ■
A585 Sea Mist	■ ■ ●	■ ■ ● ▲	■ ■ ●
A634 Terra Rosata	■ ■ ●	■ ■ ● ▲	■ ■ ●
A658 Fawn	■ ■	■ ■	■ ■
A660 Rosewood	■ ■	■ ■ ▲	■ ■
A675 Stonehenge	■ ■ ●	■ ■ ● ▲ ▲ ▲	■ ■ ●
A740 Nutmeg	■ ■	■ ■	■ ■
A745 Tawny	■ ■ ●	■ ■ ●	■ ■ ●
A750 Brown Tweed	■ ■ ●	■ ■ ● ▲	■ ■ ●
A760 Spice Mist	■ ■	■ ■	■ ■
A790 Burgundy Smoke	■ ■	■ ■ ▲ ▲ ▲	■ ■
A825 Mercury	■ ■ ●	■ ■ ● ▲	■ ■ ●
A830 Atlantic Grey	■ ■	■ ■	■ ■
A850 Graphite	■ ■ ●	■ ■ ● ▲ ▲	■ ■ ●
A870 Seal Taupe	■ ■	■ ■	■ ■
A876 Truffle	■ ■ ●	■ ■ ●	■ ■ ●
A880 Onyx	■ ■ ●	■ ■ ● ▲	■ ■ ●
A890 Ebony	■ ■	■ ■	■ ■
A900 Mica	■ ■ ●	■ ■ ● ▲ ▲ ▲	■ ■ ●
<b>Cross-Colors B Series</b>			
B100 Greige Patino	■ ■		■ ■
B110 Antico Taupe	■ ■		■ ■
B120 Peach Fresco	■ ■		■ ■
B180 Lapis	■ ■		■ ■
B190 Amethyst	■ ■		■ ■
B200 Primavera	■ ■		■ ■
B210 Seabreeze	■ ■		■ ■
B220 Doeskin	■ ■		■ ■
B230 Zeolite	■ ■		■ ■
B380 Sunflower	■ ■		■ ■
B481 Forest Green	■ ■		■ ■
B580 Oceana	■ ■		■ ■
<b>Cross-Colors C Series</b>			
C310 Bamboo	■ ■	■ ■	■ ■
C360 Maple Sugar	■ ■	■ ■	■ ■
C370 Featherstone	■ ■	■ ■	■ ■
C400 Bayberry	■ ■	■ ■	■ ■
C583 Windsurf	■ ■	■ ■	■ ■
C810 Platinum	■ ■	■ ■	■ ■



Product featured in photo at left:  
A850 Graphite 12" x 12" UPS,  
C400 Bayberry 6" x 6" PO/UPS

Product featured in photo below:  
B110 Antico Taupe 12" x 12" UPS, B230 Zeolite 6" x 6" PO



# Cross-Colors®

## Sizes Available

Nominal Size	Actual Size	Nominal Thickness
6" x 6" (cut/bevel)*	5 3/4" x 5 3/4"	5/16"
8" x 8" (A/C colors only)	7 3/4" x 7 3/4"	5/16"
12" x 12"	11 3/4" x 11 3/4"	5/16"

\* The "6" x 6" c & b tile is cut from 12" x 12" tile and the edges are beveled to provide a factory appearance. Please allow two to eight weeks for delivery depending on Crossville's production schedule.

## Recommended Use

**Cross-Colors®** – Cross-Colors Unpolished (UPS) is recommended for interior floors, walls and countertops and exterior walls in both residential and commercial environments. Cross-Colors (PO) is recommended for interior floors (except where standing water may occur), walls and countertops and exterior walls in both residential and commercial environments.

**Cross-Slate® (CS)** – The Cross-Slate finish combines the rustic and textured feel of slate with the through-body color and durability of Porcelain Stone®. Through-body color, unglazed structured surface, and a variety of sizes provide a strong commercial value where enhanced traction is needed for high traffic interior and exterior spaces. Cross-Slate is recommended for interior floors and walls as well as exterior walls and exterior walking surfaces in both residential and commercial environments.

**Cross-Tread® (CTS)** – Increased slip resistance and ease of maintenance make this tile a suitable choice for wet and greasy floor areas, as well as for exterior walking surfaces. The Cross-Tread surface pattern is eye-catching, making it a great option for transitional areas and for use as an accent tile. Meets ADA guidelines.

**Cross-Dot® (CD)** – The raised-dot pattern, with a "roughened" surface atop each dot, provides increased coefficient of friction. It is suitable for most commercial kitchens, food prep areas, service stations and other back-of-the-house areas, as well as for exterior walking surfaces. Meets ADA guidelines.

**Cross-Grip™ (CGS)** – Developed in conjunction with restaurant owners, Cross-Grip is a possible solution for those areas where slips and falls are of greatest concern. The patented raised-point texture has earned Cross-Grip the highest possible performance rating in the National Restaurant Association's testing for slip resistance. It is suitable for areas where grease, food, oil and other residue tend to accumulate. Meets ADA guidelines.

**About Cross-Sheen®** – Crossville's Cross-Sheen® finish enhances every unpolished tile we manufacture. It imparts a subtle glow that enhances color and allows stains, scuff marks and dirt to be easily wiped off the surface.

## Product Performance

Breaking Strength	350-420 lbf.	ASTM C648
Bond Strength	>200 psi	ASTM C482
Frost Resistance	Resistant	ASTM C1026
Water Absorption	<0.10%	ASTM C373
Abrasion Wear	270-330 lbf.	ASTM C501
Scratch Hardness		
Unpolished	6	MOH's Scale
Polished	5	MOH's Scale
Coefficient of Friction		ASTM C1028
Unpolished (UPS)	Dry >0.6	Wet >0.6
Cross-Slate (CS)	>0.8	>0.7
Cross-Tread (CTS)	>0.8	>0.8
Cross-Dot (CD)	>0.9	>0.8
Cross-Grip (CGS)	>1.2	>1.0
Polished (PO)	>0.6	N/A

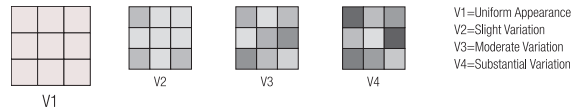
## Care & Maintenance

Regular cleaning is the best way to keep Cross-Colors (Polished, Unpolished, Cross-Slate) looking good for years to come. Use clean, hot water (combined with a household cleaner for more aggressive cleaning). Rinse thoroughly and dry with a soft cloth to prevent water spots. No waxes or sealers are needed.

Additional care should be taken when cleaning Cross-Colors textured tile (Cross-Tread, Cross-Dot and Cross-Grip). Sweep or vacuum floor debris in two directions. Saturate the surface with a neutral detergent cleaning solution mixed with hot water and agitate with a stiff-bristled deck brush. Let sit for 5-10 minutes. Scrub floor with deck brush in a circular motion. Rinse floor with clean water to suspend contaminants and remove cleaning solution. Remove rinse water with a wet vacuum. More information regarding the care and maintenance of Crossville products is available at [www.crossvilleinc.com](http://www.crossvilleinc.com).

## Shade & Texture Index

Cross-Colors has a shade variation of V1.



## Trim Data

	A Series Trim Program							B Series Trim Program			C Series Trim Program	
	(all sizes in inches)											
Size	6 x 8	1 x 6	6 x 8	6 x 8	4 x 8	4 x 8	4 x 8	4 x 8	4 x 8	4 x 8	4 x 8	4 x 8
Actual Size	5 7/8 x 7 3/4	1 x 5 7/8	5 7/8 x 7 3/4	5 7/8 x 7 3/4	3 7/8 x 7 3/4	3 7/8 x 7 3/4	3 7/8 x 7 3/4	3 7/8 x 7 3/4	3 7/8 x 7 3/4	3 7/8 x 7 3/4	3 7/8 x 7 3/4	3 7/8 x 7 3/4
Thickness	5/16	—	5/16	5/16	5/16	5/16	5/16	5/16	5/16	5/16	5/16	5/16

