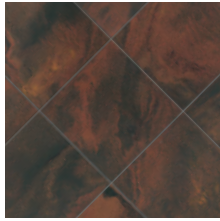


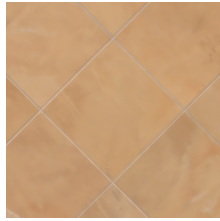
# Buenos Aires Mood

PORCELAIN STONE

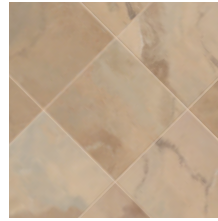
- A sophisticated and elegant alternative to natural stone
- Multistrato Technology creates subtle shading, fluidity and movement within each color
- Textured finish suitable for exterior usage
- Consistency of color among textures allows for blended, visually appealing installations
- Multiple sizes and rectified edges for maximum design versatility



VS154 Tango - Polished



VS151 LaBoca - Polished



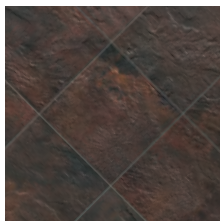
VS152 Pampa - Polished



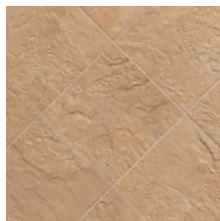
VS150 Polo - Polished



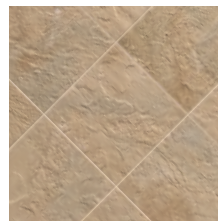
VS153 Recoleta - Polished



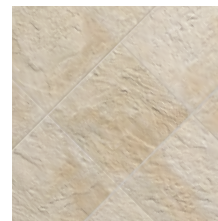
VS154 Tango - Textured



VS151 LaBoca - Textured



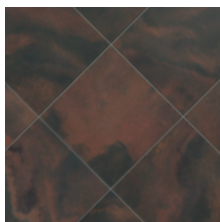
VS152 Pampa - Textured



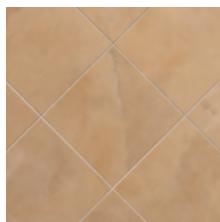
VS150 Polo - Textured



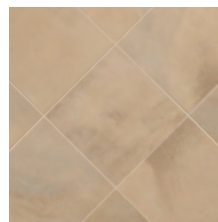
VS153 Recoleta - Textured



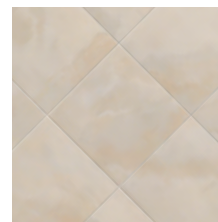
VS154 Tango - Unpolished



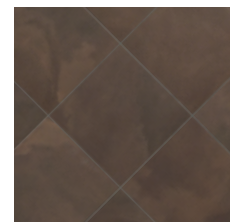
VS151 LaBoca - Unpolished



VS152 Pampa - Unpolished



VS150 Polo - Unpolished



VS153 Recoleta - Unpolished

## Size & Trim Data

Nominal Size	Actual Size (mm)	Thickness
6" x 6"	147 x 147	10.5
12" x 12"	297 x 297	10.5
4" x 24"	97 x 597	10.5
12" x 24"	297 x 597	10.5
24" x 24"	597 x 597	10.5
2" x 4" Mosaics*	297 x 597	10.5
8 1/2" x 12" Listello	218 x 297	10.5
8 1/2" x 8 1/2" Listello Corner	218 x 218	10.5
*12" x 24" mounted sheet		

## Trim

Nominal Size	Actual Size (mm)	Thickness
3" x 12" Single Bullnose	70 x 298	10
6" x 12" Cove Base	150 x 298	10
6" x 8" Cove Base Corner (left)	150 x 200	10
6" x 8" Cove Base Corner (right)	150 x 200	10



3" x 12" Single Bullnose



6" x 12" Cove Base



6" x 8" Cove Base  
Corner Right



6" x 8" Cove Base  
Corner Left

## Recommended Usage

Buenos Aires Mood (polished and unpolished) is recommended for interior walls and floors and exterior walls in both commercial and residential applications. The textured finish is recommended for interior and exterior walls and floors and exterior paving. Crossville recommends designing all exterior walking surfaces to provide adequate drainage in order to prevent standing water. Polished tile is not recommended for wet areas or where standing water may occur.

## Care & Maintenance

Regular cleaning is the best way to keep Buenos Aires Mood tile looking good for years to come. Use clean, hot water (combined with a household cleaner for more aggressive cleaning). Rinse

thoroughly and dry with a soft cloth to prevent spots. More information regarding the care and maintenance of Crossville products is available at [www.crossvilleinc.com](http://www.crossvilleinc.com).

## Installation Notes

Prior to grouting, application of a penetrating sealer is recommended on Buenos Aires Mood polished finish. For pattern ideas and corner treatment options, visit [www.crossvilleinc.com](http://www.crossvilleinc.com).

## Shade and Texture Index



V1



V2



V3



V4

V1=Uniform Appearance  
V2=Slight Variation  
V3=Moderate Variation  
V4=Substantial Variation

Buenos Aires Mood has a shade variation V3.

## Product Performance

Breaking Strength	>425 lbf.	ASTM C648
Bond Strength	>200 psi	ASTM C482
Deep Abrasion	<135	ASTM C501
Chemical Resistance	Unaffected	ASTM C650
Frost Resistance	Resistant	ASTM C1026
Water Absorption	<0.10%	ASTM C373
Scratch Hardness	8	MOH's Scale
COF-Dry	PO >0.6 UP >0.7 TX >0.7	ASTM C1028
COF-Wet	PO N/A UP >0.6 TX >0.7	ASTM C1028





Buenos Aires Mood  
Floor: VS153 Recoleta 24"x24" Unpolished, VS153 Recoleta 12"x24" Unpolished,  
VS153 Recoleta 12"x12" Polished

Crossville, Inc. • P.O. Box 1168, Crossville TN 38557  
Phone: 931.484.2110 • Fax: 931.456.2956  
E-mail: [crossc@crossvilleinc.com](mailto:crossc@crossvilleinc.com) • [www.crossvilleinc.com](http://www.crossvilleinc.com)

 CROSSVILLE.