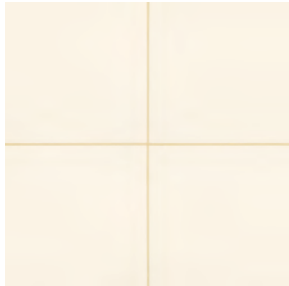


# Building Blox

PORCELAIN STONE

- Available in 9 sophisticated, contemporary color families and three patterns.
- Part of a comprehensive furnishing collection that includes carpet, furniture, lighting, wallpaper and tile

- Patterns offer a wide range of color / design potential Tile designs can be beautifully enhanced with Accent Innovations by Crossville
- Created by designers for designers



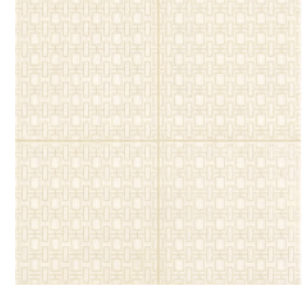
A1201 White Solid



A1201 White Greek Key



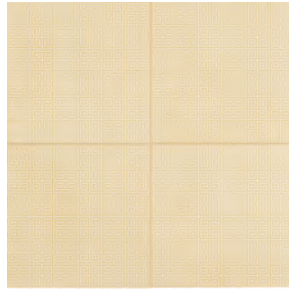
A1201 White City Garden



A1201 White Urban Fabric



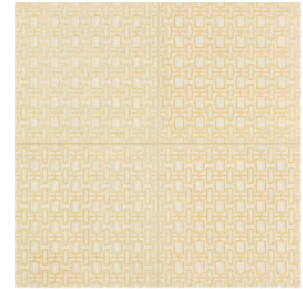
A1202 Limestone Solid



A1202 Limestone Greek Key



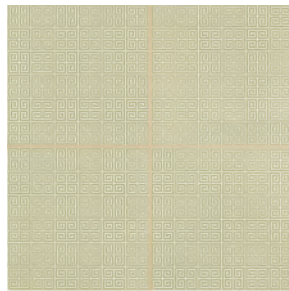
A1202 Limestone City Garden



A1202 Limestone Urban Fabric



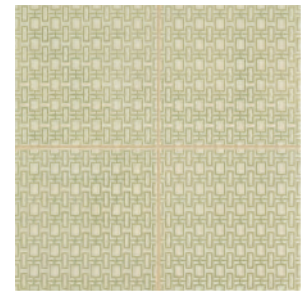
A1203 Ice Solid



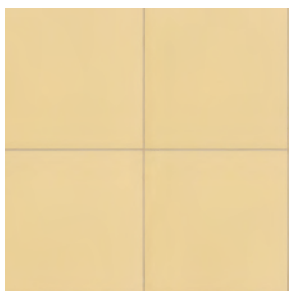
A1203 Ice Greek Key



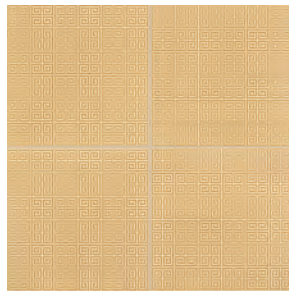
A1203 Ice City Garden



A1203 Ice Urban Fabric



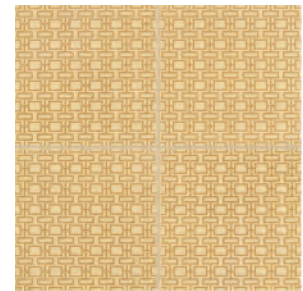
A1204 Wheat Solid



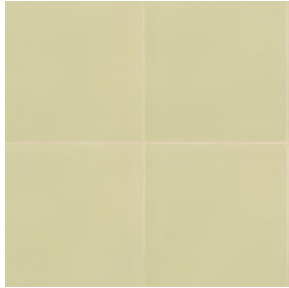
A1204 Wheat Greek Key



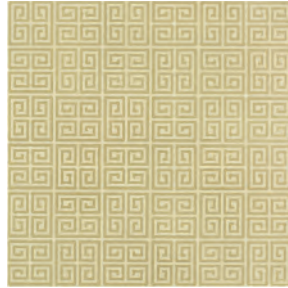
A1204 Wheat City Garden



A1204 Wheat Urban Fabric



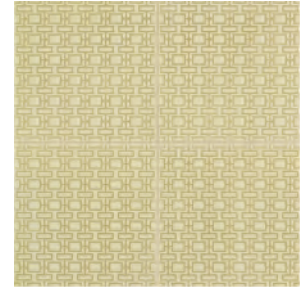
A1205 Pistachio Solid



A1205 Pistachio Greek Key



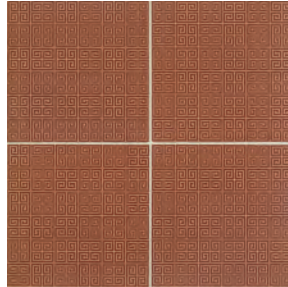
A1205 Pistachio City Garden



A1205 Pistachio Urban Fabric



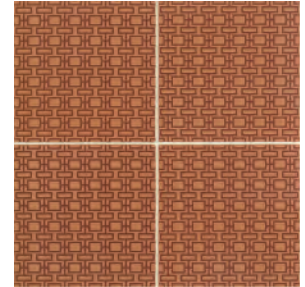
A1206 Terra Cotta Solid



A1206 Terra Cotta Greek Key



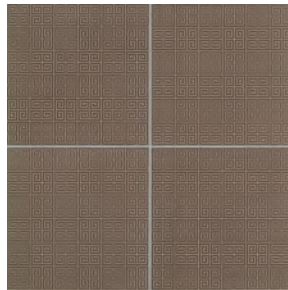
A1206 Terra Cotta City Garden



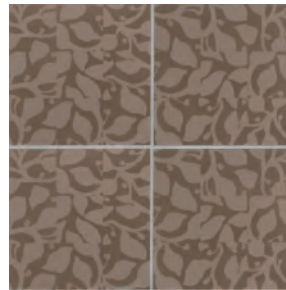
A1206 Terra Cotta Urban Fabric



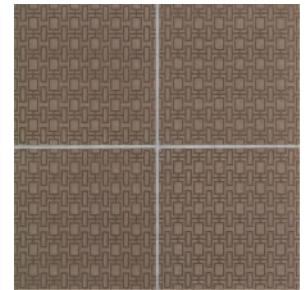
A1207 Taupe Solid



A1207 Taupe Greek Key



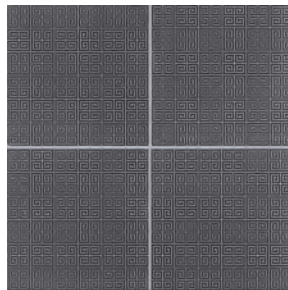
A1207 Taupe City Garden



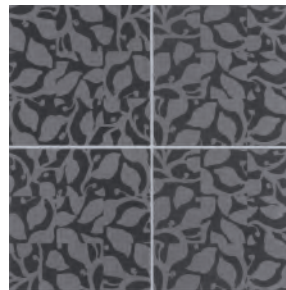
A1207 Taupe Urban Fabric



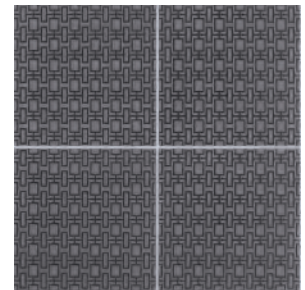
A1208 Slate Solid



A1208 Slate Greek Key



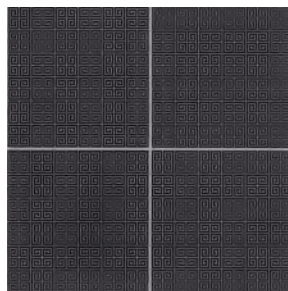
A1208 Slate City Garden



A1208 Slate Urban Fabric



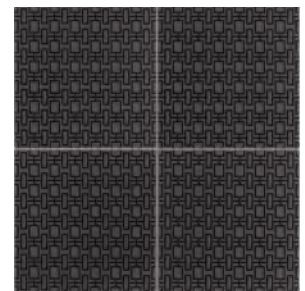
A1209 Black Solid



A1209 Black Greek Key



A1209 Black City Garden



A1209 Black Urban Fabric

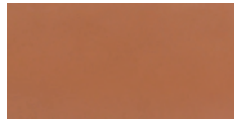
# Building Blox

PORCELAIN STONE

**Sizes Available** (Available in all colors and patterns except as noted)



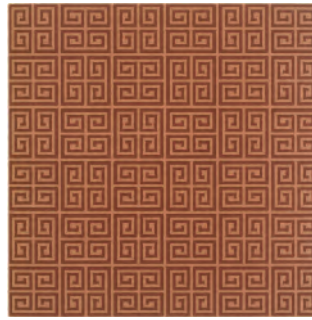
18" x 18"



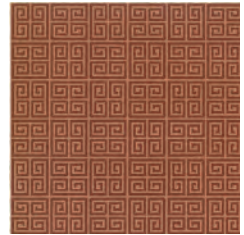
6" x 12" (solid colors only)



12" x 12"



18" x 18"

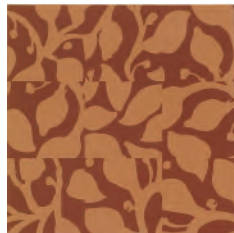


12" x 12"

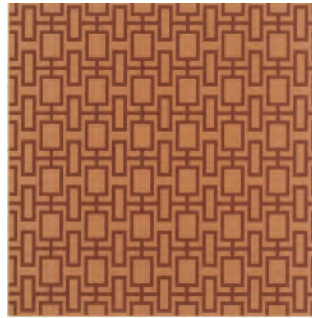
Urban Fabric, Greek Key and City Garden have a larger scale pattern in the 18" x 18" tile



18" x 18"



12" x 12"



18" x 18"



12" x 12"

## Sizes Available

Nominal Size	Actual Size	Thickness (in)
6" x 12"	5-13/16" x 11-3/4"	3/8"
12" x 12"	11-3/4" x 11-3/4"	3/8"
18" x 18"	17-13/16" x 17-13/16"	3/8"

\*Available in solid colors only

## Trim Sizes (Available in solid colors only)

4" x 12" Single Bullnose	3-3/4" x 11-3/4"	3/8"
2" x 12" Cove Base	1-3/4" x 11-3/4"	3/8"
2" x 2" Cove Base Inside Corner	1-3/4" x 1-3/4"	3/8"
2" x 4" Cove Base Outside Corner	1-3/4" x 3-1/2"	3/8"



4" x 12" Single Bullnose



2" x 12" Cove Base



2" x 2" Inside Cove Base Corner



2" x 4" Outside Cove Base Corner

## Recommended Usage

Building Blox is recommended for interior floors, walls and countertops and exterior walls in both residential and commercial applications.

## Shade & Texture Index

Americana has a shade variation of V1



V1



V2



V3



V4

V1=Uniform Appearance  
V2=Slight Variation  
V3=Moderate Variation  
V4=Substantial Variation

## Care and Maintenance

Regular cleaning is the best way to keep Building Blox tile looking good for years to come. Use clean, hot water (combined with a household cleaner for more aggressive cleaning). Rinse thoroughly and dry with a soft cloth to prevent water spots. No waxes or sealers are needed. More information regarding the care and maintenance of Crossville products is available at [www.crossvilleinc.com](http://www.crossvilleinc.com).

## Product Performance

Breaking Strength	>350-450 lbf.	ASTM C648
Bond Strength	>200 psi	ASTM C482
Chemical Resistance	Unaffected	ASTM C650
Frost Resistance	Resistant	ASTM C1026
Water Absorption	<0.10%	ASTM C373
Scratch Hardness	6	MOH's Scale
Abrasion Resistance Glazed		ASTM C1027
A1209	Class 2	
A1208, A1207, A1206	Class 3	
A1205, A1204	Class 4	
A1203, A1202, A1201	Class 5	
Coefficient of Friction		
Dry	>0.6	ASTM C1028
Wet	>0.6	ASTM C1028

