

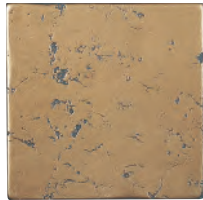
Patina Metals

DESIGN SOLUTION

- Patina Metals tile simulates authentic, distressed antique metals and are hand-finished, so no two tiles are exactly the same.
- Manufactured in a way that allows for significant relief in both the decorative tiles and moldings.
- Patina field tile comes in 4"x4" and 6"x6" sizes

- Patina features three styles of 4"x4" and 6"x6" decorative tile in each metal - all with a beautiful and Patina Metals are ideal for interior wall applications.
- Patina Metals are easy to clean and maintain

Bronze Verdigris



Field Tile MT144 6' x 6' *
Field Tile MT141 4' x 4' *



Deco Tile MT156 6' x 6'



Deco Tile MT157 6' x 6'



Deco Tile MT158 6' x 6'



Liner Bar MT150 2-3/4' x 8'



Liner Bar MT153 2' x 8'



Deco Tile MT159
4' x 4'



Deco Tile MT160
4' x 4'



Deco Tile MT161
4' x 4'



Liner Bar MT154 1' x 12'



Liner Bar MT155 1' x 12' (more textured than MT154 above)



Liner Bar MT148 2' x 12'



Liner Bar MT152 2' x 12'



Liner Bar MT149 3' x 12'

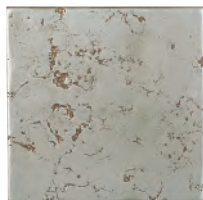


Liner Bar MT151 2' x 12'



Chair Rail MT147 3' x 12'

Rust Nickel Silver



Field Tile MT104 6' x 6' *
Field Tile MT101 4' x 4' *



Deco Tile MT118 6' x 6'



Deco Tile MT117 6' x 6'



Chair Rail MT107 3' x 12'



Liner Bar MT108 2' x 12'



Deco Tile MT116 6' x 6'



Deco Tile MT119
4' x 4'



Deco Tile MT120
4' x 4'



Deco Tile MT121
4' x 4'



Liner Bar MT109 3' x 12'



Liner Bar MT114 1' x 12'



Liner Bar MT115 1' x 12' (more textured than MT114 above)



Liner Bar MT111 2' x 12'



MT110 - 2-3/4' X 8' Liner Bar



Liner Bar MT112 2' x 12'



MT113 - 2' X 8' Liner Bar



Sizes Available

Nominal Size	Actual Size	Metric (cm)
4" x 4"	3-3/4" x 3 3/4"	10 x 10
6" x 6"	5-3/4" x 5 3/4"	15 x 15

Recommended Usage

Patina Metals products are recommended for use on interior walls in both residential and commercial applications.

Product Performance

Freeze-Thaw Resistance	No visual defects	ASTM C1026
Moisture Expansion	0.05	ASTM C370
Thermal Shock Resistance	No visual defects	ASTM C484

Care and Maintenance

Regular cleaning is the best way to keep your Patina Metals tile looking new for years to come. All spills should be cleaned as quickly as possible. A soft cloth and warm water should be sufficient for most situations. If more aggressive cleaning is required, use a neutral cleaner with hot water, rinse thoroughly with clean water, and dry with a soft cloth.



Patina Metals
Wall design includes:
Patina Metals, Rust Nickel Silver
MT104 – 6" x 6" Field Tile
MT117 – 6" x 6" Deco

Shelf design includes:
Patina Metals, Rust Nickel Silver
MT112 – 2" x 12" Liner Bar
MT101 – 4" x 4" Field Tile
MT105 – 4" x 4" Surface Bullnose

Crossville, Inc. • P.O. Box 1168, Crossville TN 38557
Phone: 931.484.2110 • Fax: 931.456.2956
E-mail: crossc@crossvilleinc.com • www.crossvilleinc.com

 CROSSVILLE_®