

# Vista Americana

PORCELAIN STONE

- Inspired by the great American landscape, Vista Americana captures the warmth of its coast, the romance of its rolling hills, and the grandeur of its mountain ranges.
- Four design-friendly colors and a variety of popular sizes

- Ideal for both commercial and residential applications.
- All colors contain post-industrial recycled content and will last for a lifetime, Vista Americana helps protect the landscape that inspired this new series.



2" x 2" Mosaic

AV181 Dunes



2" x 2" Mosaic

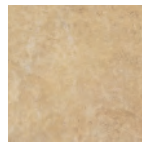
AV182 Foothills



18" x 18"



6" x 18"



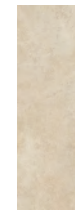
12" x 12"



6" x 6"



18" x 18"



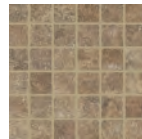
6" x 18"



12" x 12"

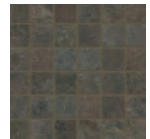
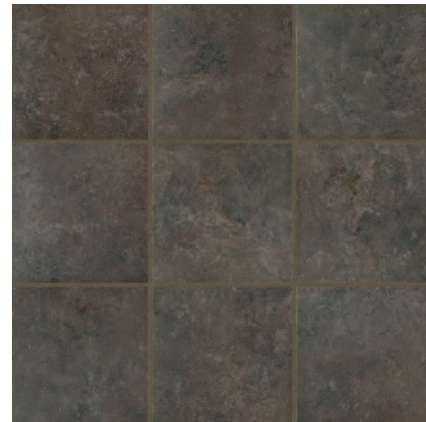


6" x 6"



2" x 2" Mosaic

AV183 Plateau



2" x 2" Mosaic

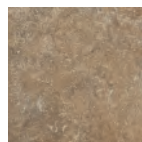
AV184 Palisades



18" x 18"



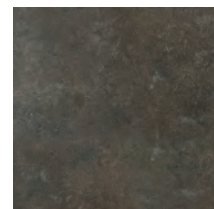
6" x 18"



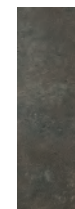
12" x 12"



6" x 6"



18" x 18"



6" x 18"



12" x 12"



6" x 6"

# Vista Americana

PORCELAIN STONE

## Sizes Available

Nominal Size	Actual Size	Thickness
6" x 6"	5-3/4" x 5-3/4"	3/8"
6 x 18	5-3/4 x 17-3/4	3/8"
12" x 12"	11-3/4" x 11-3/4"	3/8"
18" x 18"	17-3/4" x 17-3/4"	3/8"
2" x 2" Mosaics*	11-3/4" x 11-3/4"	3/8"

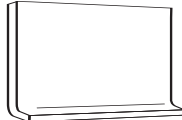
\* Sheet mounted

## Trim (available in all colors)

4" x 12" Single Bullnose	3-3/4" x 11-3/4"	3/8"
6" x 12" Cove Base	5-3/4" x 11-3/4"	3/8"



4" x 12" Bullnose



6" x 12" Cove Base

## Product Performance

Breaking Strength	>450 lbf.	ASTM C648
Bond Strength	>200 psi	ASTM C482
Chemical Resistance	Unaffected	ASTM C650
Frost Resistance	Resistant	ASTM C1026
Water Absorption	<0.10%	ASTM C373
Scratch Hardness	7	MOH's Scale
Coefficient of Friction	Dry	>0.7
	Wet	>0.6

## Recommended Usage

Vista Americana is recommended for interior floors, walls and countertops and exterior walls in both residential and commercial applications

## Care and Maintenance

Regular cleaning is the best way to keep Vista Americana tile looking good for years to come. Use clean, hot water (combined with a household cleaner for more aggressive cleaning). Rinse thoroughly and dry with a soft cloth to prevent water spots. No waxes or sealers are needed. More information regarding the care and maintenance of Crossville products is available at [www.crossvilleinc.com](http://www.crossvilleinc.com).

## Shade & Texture Index

Vista Americana has a shade variation of V4.



V1



V2



V3



V4

V1=Uniform Appearance  
V2=Slight Variation  
V3=Moderate Variation  
V4=Substantial Variation



This product contains post-industrial recycled content.

Percentage varies by color.

- AV181 Dunes - 2%
- AV182 Foothills - 2%
- AV183 Plateau - 6%
- AV184 Palisades - 18%



Product featured in photo above: AV182 Foothills 2" x 2" Mosaics, AV184 Palisades 6" x 6", 18" x 18"



Product featured in photo above: AV181 Dunes 2" x 2" Mosaic, 12" x 12"